

New England HOME

Celebrating Fine Design, Architecture, and Building



Waterfront Idyll

Soak up the views

The homeowners of this Lake Winnepesaukee retreat requested a clean, northern European vibe, so designers Paula and Clayton Daher covered the great room's coffered ceiling and fireplace wall in white oak. The artwork, by Gotiez, is part of the owners' collection. **FACING PAGE:** The Dahers also clad the foyer's catwalk in white oak, while the floor transitions from antique French pavers to custom-stained fir.



Lakefront Legacy

Executed with exacting precision, a remodeled Lake Winnepesaukee retreat will last lifetimes.

Text by ERIKA AYN FINCH | *Photography by* MICHAEL J. LEE



Located behind the kitchen, the screened porch has the vibe of a tree house, and a new HVAC system makes it usable year-round. A large Ralph Lauren pendant complements the dramatic roofline.

One hundred years.

That's how long one homeowner's family has vacationed on the shores of New Hampshire's Lake Winnepesaukee. And, if it's up to him, his wife, and their crack-crjack design team, his heirs will be there for another one hundred.

In 2015, the couple, whose primary residence is in Florida, purchased a lakeside home built in the early 2000s that boasted the glossy-white Tuscan columns to prove it—a total of six on the main floor, to be exact. After living in the home for five years, they embarked on a multiyear, three-phase renovation aimed at embracing the water views, expanding outdoor access, incorporating Scandinavian design, building out a lower-level gathering space, and yes, doing away with all those columns. The idea was to create a home that would accommodate visiting friends and family for generations to come.

The homeowners enlisted the help of Boston- and Maine-based mother-and-son team Paula and Clayton Daher of Daher Interior Design as well as a slew of New



all the leeway to do our best work, and they were so excited by how well we all collaborated. In fact, they tell us they miss those Friday meetings.”

To fulfill the wife’s request for a clean, northern European (she’s originally from Belgium), sophisticated feeling inside, the designers stripped the fir flooring of its orange-tinted color and replaced it with a warm brown stain with gray undertones. Walls went from pale yellow to soft white.

The team removed a painted-wood mantel from the great room’s floor-to-ceiling stone fireplace, carefully matching new stone to existing, and wrapped ceilings, beams, and even some walls in the great room and heated screened porch in white oak.

Built-ins and secret nooks abound, like in the youngest daughter’s suite where her study boasts cubbies and shelves for art supplies and books. A hidden door in a wall of shelves in the lounge opens to reveal a billiards room. In a guest suite, millwork conceals a desk, chests of drawers, and shelving.



ABOVE: In the dining room, a breakfront painted Benjamin Moore Chestnut supports dinner parties and conceals a pantry with a wet bar and flower-arranging counter. **LEFT:** The primary suite, located on the main level, is accessed through this hallway, wrapped in a watery hued banana-tree-bark wallcovering crafted in Belgium by Omexco. **FACING PAGE:** In the kitchen, also part of the great room, Hector Finch pendants illuminate dual islands and reflect off the glossy zellige-tile backsplash. New Hampshire’s JH Klein Wassink crafted the cabinetry.

Hampshire-based professionals like Tim Long and John Bruss of Meridian Construction and Eric Buck of Terrain Planning & Design. For the most part, they gave the designers free rein, but there was one major caveat: the family didn’t want to miss a single summer on the lake. Work had to take place in the offseason.

“Nine times out of ten, in situations like this, we have to tear down the existing home and build something entirely new to accommodate things like ceiling heights and number of rooms,” says Long. “But in this instance, the house had good bones, and we knew we could get everything we wanted by renovating.”

Nonetheless, it was a monumental task, says Paula. A structural engineer had to be brought in to remove the load-bearing columns, fenestration on the water-facing side of the home was reimagined to capitalize on the views, a deck had to be expanded so it could be accessed from the living room, the dining room and kitchen swapped locations, earth needed to be excavated to make way for windows in the garden-level lounge, a boathouse was constructed...the list goes on.

“Every Friday morning, from 8 until 10, for two years, the design team met,” says Paula. “And the homeowners were equally involved. They gave us

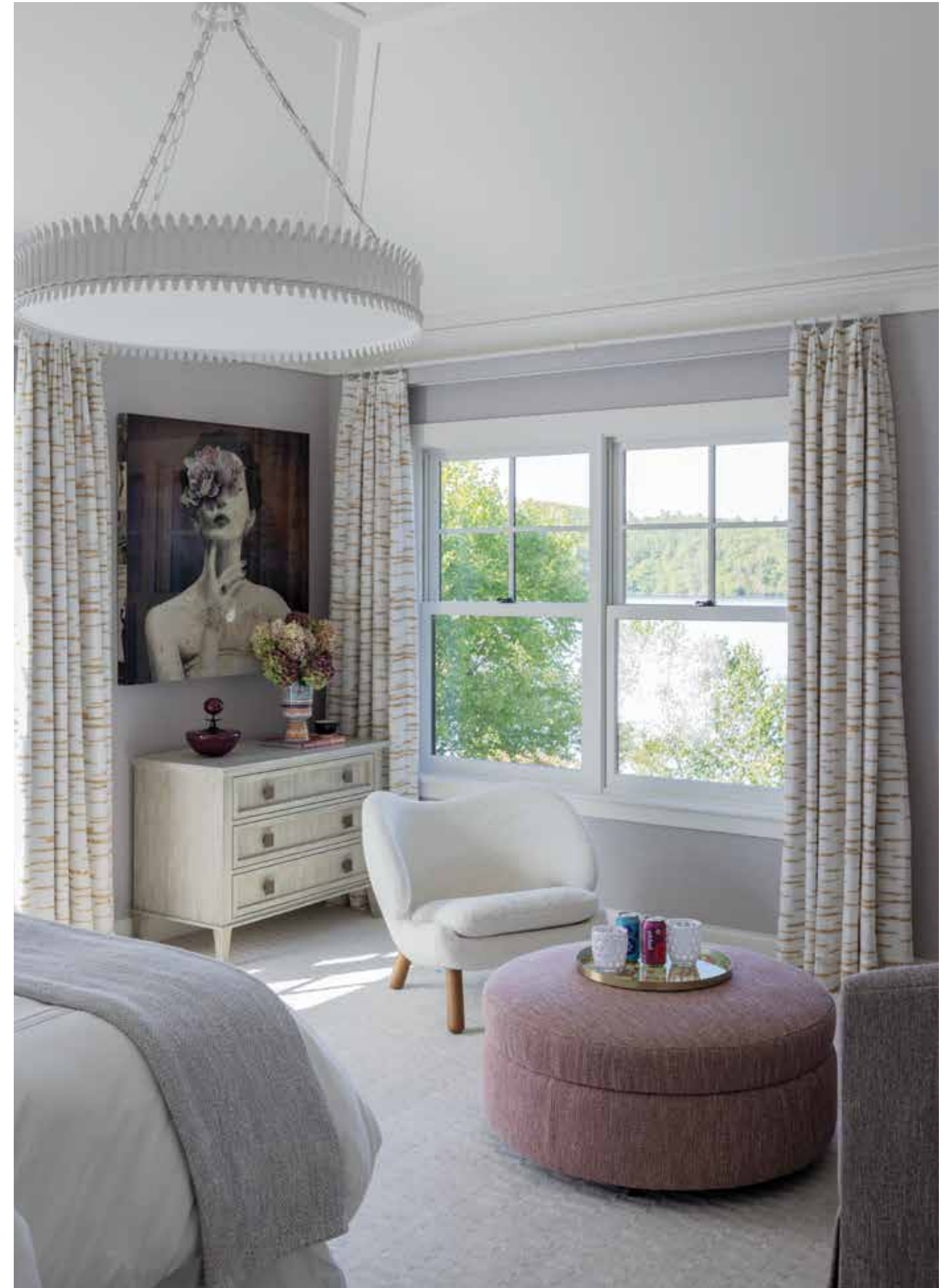


“None of the rooms took a back seat.”

—Designer Clayton Daher



CLOCKWISE FROM ABOVE: To add layers and coziness to the large primary suite, the Dahers designed a walnut headboard that spans almost the entire length of the wall. The youngest daughter's study features built-in storage for her hobbies, while a new dormer hugs her workspace. A wall of shelves in the garden-level lounge masks the door into the billiards room. **FACING PAGE:** The Dahers decorated the eldest daughter's room in shades of lavender and purple; the painting was a gift from her parents.



“The house had good bones, and we knew we could get everything we wanted by renovating.”

—Builder Tim Long



ABOVE: Breakfast on the kitchen deck comes with views of the boathouse, covered dock, and, of course, the lake. The chairs are from Kingsley Bate. **RIGHT:** Meridian Construction replaced the existing dock's pressure-treated boards with ipe decking and trim. Just out of frame is a new sandy "perch beach."

“None of the rooms took a back seat,” says Clayton. Not even the primary suite hallway, with its 100-year-old antique rug from Afghanistan and banana-tree-bark wallcovering.

“And they really considered how the house would transform for them over the years,” adds Paula. “They thought of everything very thoroughly. It's truly a multifunctional legacy house.”

EDITOR'S NOTE: For details, see Resources.

INTERIOR ARCHITECTURE AND DESIGN:
Daher Interior Design

BUILDER:
Meridian Construction

LANDSCAPE DESIGN:
Terrain Planning & Design



IN THE
DETAILS

The Good Life

ON THE MARKET • DESIGN DISPATCHES • THE SCENE

Lakefront
Legacy,
page 140

One of these days, this Douglas fir boathouse on the shores of New Hampshire's Lake Winnepesaukee will shelter a heritage wooden boat, says the homeowner. Until then, it's the ideal spot to dock his Cobalt bowrider, both in the summer and in the winter, thanks to a lift installed by **Watermark Marine Construction**. With a cradle system specifically designed for the Cobalt, the sleek hydraulic lift is free of visible cables—the mechanism is hidden in the framework of the surrounding ipe dock, says Watermark owner Paul Goodwin. "The boat lifts fully out of the water and is stored inside in the winter. And thanks to the wide boathouse doors, everything boating related—kayaks, water skis, water toys—can be stored out of the elements." —*Erika Ayn Finch*